



**Government of India  
Ministry of Earth Sciences  
India Meteorological Department**



**Date: 22<sup>nd</sup> January, 2026  
Time of Issue: 1900 hours IST**

**Special Message (No.- 04)**

**FROM: INDIA METEOROLOGICAL DEPARTMENT  
TO: CONTROL ROOM, NDM, MINISTRY OF HOME AFFAIRS  
CONTROL ROOM, NDMA  
SECRETARY, MOES  
DIRECTOR GENERAL, DOORDARSHAN  
DIRECTOR GENERAL, AIR PIB MOES  
CHIEF SECRETARY, GOVT. OF JAMMU & KASHMIR  
CHIEF SECRETARY, GOVT. OF LADAKH  
CHIEF SECRETARY, GOVT. OF HIMACHAL PRADESH  
CHIEF SECRETARY, GOVT. OF UTTARAKHAND  
CHIEF SECRETARY, GOVT. OF PUNJAB  
CHIEF SECRETARY, GOVT. OF HARYANA  
CHIEF SECRETARY, GOVT. OF CHANDIGARH  
CHIEF SECRETARY, GOVT. OF DELHI  
CHIEF SECRETARY, GOVT. OF UTTAR PRADESH  
CHIEF SECRETARY, GOVT. OF RAJASTHAN**

**Subject: (i) Due to an intense Western disturbance heavy rainfall/ snowfall accompanied with Hailstorm, lightning & gusty winds likely at isolated places over Western Himalayan region on 22<sup>nd</sup> & 23<sup>rd</sup> January, 2026. Light to moderate rainfall also likely at a few places over the plains of northwest India during the same period.**

**(ii) Another intense Western Disturbance likely to affect northwest India from 26<sup>th</sup> to 28<sup>th</sup> January, 2026.**

**Weather Systems and Forecast & Warnings during next 7 days: (Annexure I)**

- ❖ A **Western disturbance** seen as a cyclonic circulation over Afghanistan between 3.1 and 5.8 km above mean sea level with the Trough in middle & upper Tropospheric westerlies with its axis at 7.6 km above mean sea level roughly along Long. 63°E to the north of Lat. 25°N.
- ❖ An induced low pressure area lay over central Pakistan.
- ❖ A **fresh western disturbance** is likely to affect northwest India from 26<sup>th</sup> January 2026.

**Under the influence of above system, the following weather is likely:**

- ❖ Fairly widespread to widespread rainfall/snowfall over Jammu-Kashmir-Ladakh, Himachal Pradesh and Uttarakhand on 22<sup>nd</sup> & 23<sup>rd</sup> January.
- ❖ Fairly widespread to widespread light to moderate rainfall over Punjab on 22<sup>nd</sup> & 23<sup>rd</sup> with isolated/scattered light to moderate rainfall over Haryana Chandigarh & Delhi, West Uttar Pradesh and Rajasthan on 22<sup>nd</sup> & 23<sup>rd</sup> and East Uttar Pradesh on 23<sup>rd</sup> & 24<sup>th</sup> January.
- ❖ Thunderstorm activity accompanied with **lightning & wind speed reaching 40-50 kmph gusting to 60 kmph** likely over Jammu-Kashmir-Ladakh-Gilgit-Baltistan-Muzaffarabad, Himachal Pradesh, Punjab and Rajasthan on 22<sup>nd</sup> and 23<sup>rd</sup>; Uttarakhand, Haryana, Chandigarh, Delhi and Uttar Pradesh on 23<sup>rd</sup> January.
- ❖ **Isolated heavy rainfall/snowfall** over Kashmir valley on 22<sup>nd</sup> & 23<sup>rd</sup> and higher reaches of Himachal Pradesh and Uttarakhand on 23<sup>rd</sup> and heavy rainfall over Punjab on 23<sup>rd</sup> January.
- ❖ **Hailstorm activity** likely over Himachal Pradesh, Uttarakhand, Haryana and West Uttar Pradesh on 23<sup>rd</sup>; Jammu-Kashmir-Ladakh-Gilgit-Baltistan-Muzaffarabad, Punjab and north Rajasthan on 22<sup>nd</sup> & 23<sup>rd</sup> January.

The state-wise forecast is given below: (Warning graphics are given at ANNEXURE-I)

S. No.	State/sub-division	Forecast
1.	Jammu, Kashmir and Ladakh	<ul style="list-style-type: none"> <li>Fairly widespread to widespread rainfall/snowfall on 22<sup>nd</sup> &amp; 23<sup>rd</sup> January.</li> <li>Thunderstorm activity accompanied with <b>lightning &amp; wind speed reaching 40-50 kmph gusting to 60 kmph</b> likely on 22<sup>nd</sup> and 23<sup>rd</sup> January.</li> <li>Isolated <b>heavy rainfall/snowfall</b> likely over Kashmir valley on 22<sup>nd</sup> &amp; 23<sup>rd</sup> January.</li> <li><b>Hailstorm activity</b> likely on 22<sup>nd</sup> &amp; 23<sup>rd</sup> January.</li> </ul>
2.	Himachal Pradesh	<ul style="list-style-type: none"> <li>Fairly widespread to widespread rainfall/snowfall on 22<sup>nd</sup> &amp; 23<sup>rd</sup> January.</li> <li>Thunderstorm activity accompanied with <b>lightning &amp; wind speed reaching 40-50 kmph gusting to 60 kmph</b> likely on 22<sup>nd</sup> and 23<sup>rd</sup> January.</li> <li>Isolated <b>heavy rainfall/snowfall</b> likely over the higher reaches on 23<sup>rd</sup> January.</li> <li><b>Hailstorm activity</b> likely on 23<sup>rd</sup> January.</li> </ul>
3.	Uttarakhand	<ul style="list-style-type: none"> <li>Fairly widespread to widespread rainfall/snowfall on 22<sup>nd</sup> &amp; 23<sup>rd</sup> January.</li> <li>Thunderstorm activity accompanied with <b>lightning &amp; wind speed reaching 40-50 kmph gusting to 60 kmph</b> likely on 23<sup>rd</sup> January.</li> <li>Isolated <b>heavy rainfall/snowfall</b> likely over the higher reaches on 23<sup>rd</sup> January.</li> <li><b>Hailstorm activity</b> likely on 23<sup>rd</sup> January.</li> </ul>
4.	Punjab	<ul style="list-style-type: none"> <li>Fairly widespread to widespread light to moderate rainfall on 22<sup>nd</sup> &amp; 23<sup>rd</sup> January.</li> <li>Thunderstorm activity accompanied with <b>lightning &amp; wind speed reaching 40-50 kmph gusting to 60 kmph</b> likely on 22<sup>nd</sup> and 23<sup>rd</sup> January.</li> <li>Isolated <b>heavy rainfall</b> over Punjab on 23<sup>rd</sup> January.</li> <li><b>Hailstorm activity</b> likely on 22<sup>nd</sup> &amp; 23<sup>rd</sup> January.</li> </ul>
5.	Haryana, Chandigarh & Delhi	<ul style="list-style-type: none"> <li>Isolated/scattered light to moderate rainfall over Haryana Chandigarh &amp; Delhi on 22<sup>nd</sup> &amp; 23<sup>rd</sup> January.</li> <li>Thunderstorm activity accompanied with <b>lightning &amp; wind speed reaching 40-50 kmph gusting to 60 kmph</b> likely on 23<sup>rd</sup> January.</li> <li><b>Hailstorm activity</b> likely over Haryana on 23<sup>rd</sup> January.</li> </ul>
6.	Uttar Pradesh	<ul style="list-style-type: none"> <li>Isolated/scattered light to moderate rainfall over West Uttar Pradesh on 22<sup>nd</sup> &amp; 23<sup>rd</sup> and East Uttar Pradesh on 23<sup>rd</sup> &amp; 24<sup>th</sup> January.</li> <li>Thunderstorm activity accompanied with <b>lightning &amp; wind speed reaching 40-50 kmph gusting to 60 kmph</b> likely on 23<sup>rd</sup> January.</li> <li><b>Hailstorm activity</b> likely over West Uttar Pradesh on 23<sup>rd</sup> January.</li> </ul>
7.	Rajasthan	<ul style="list-style-type: none"> <li>Isolated/scattered light to moderate rainfall on 22<sup>nd</sup> &amp; 23<sup>rd</sup> January.</li> <li>Thunderstorm activity accompanied with <b>lightning &amp; wind speed reaching 40-50 kmph gusting to 60 kmph</b> likely on 22<sup>nd</sup> and 23<sup>rd</sup> January.</li> <li><b>Hailstorm activity</b> likely over north Rajasthan on 22<sup>nd</sup> &amp; 23<sup>rd</sup> January.</li> </ul>

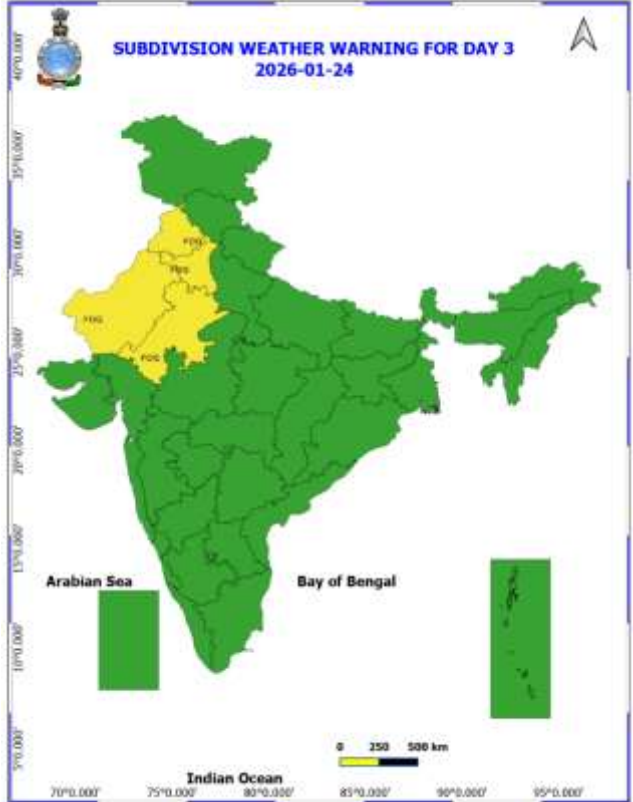
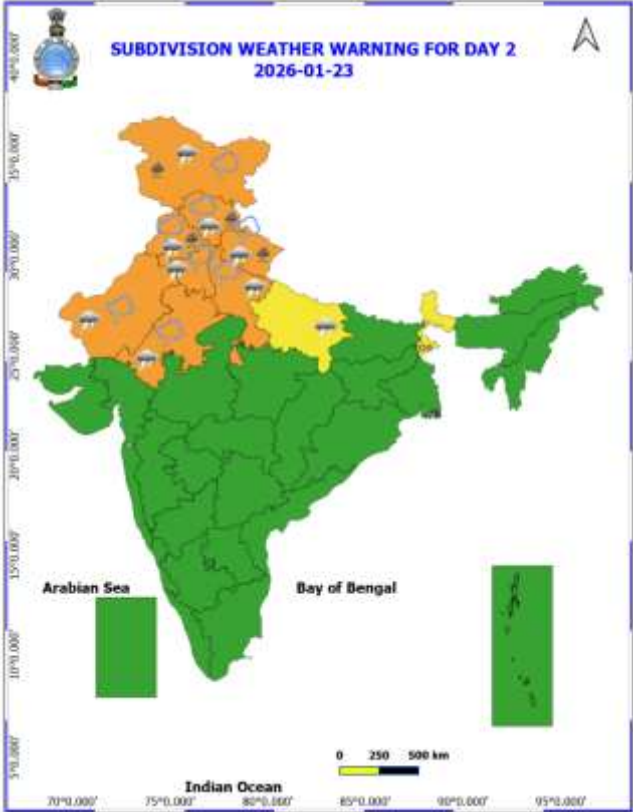
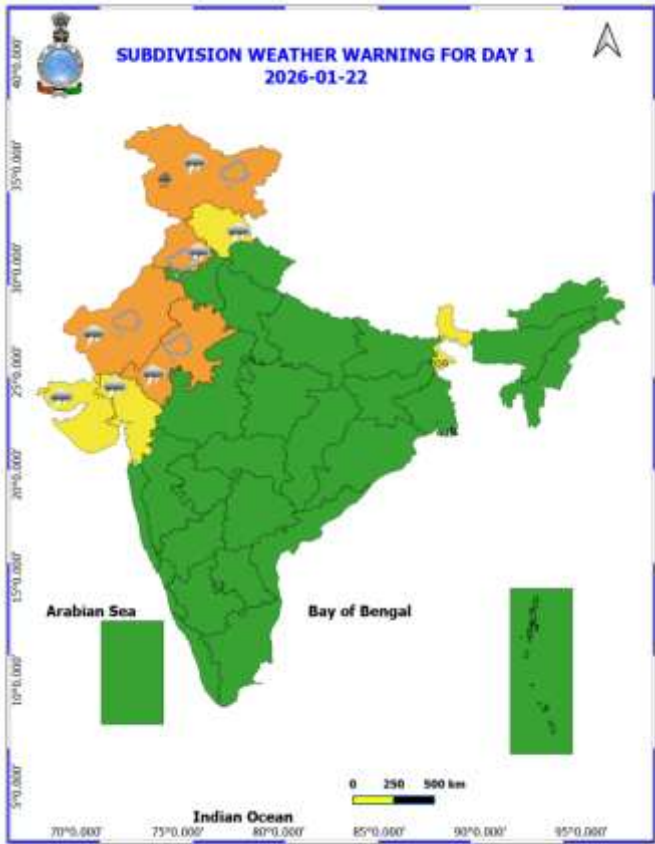
The state-wise forecast & warnings are given at ANNEXURE I

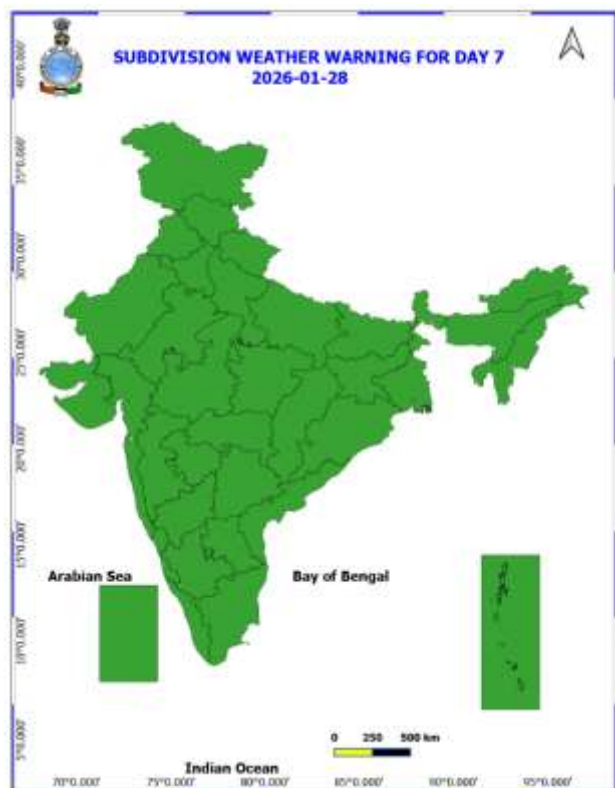
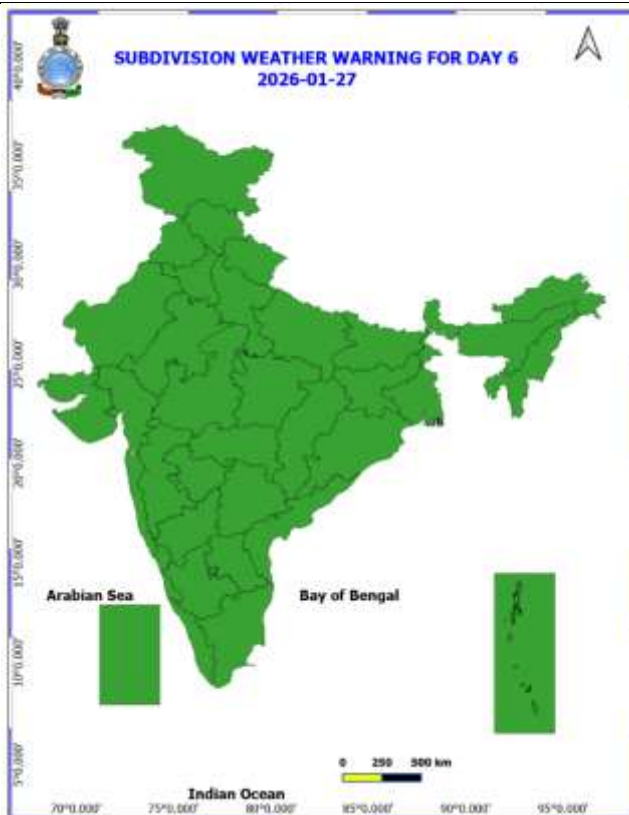
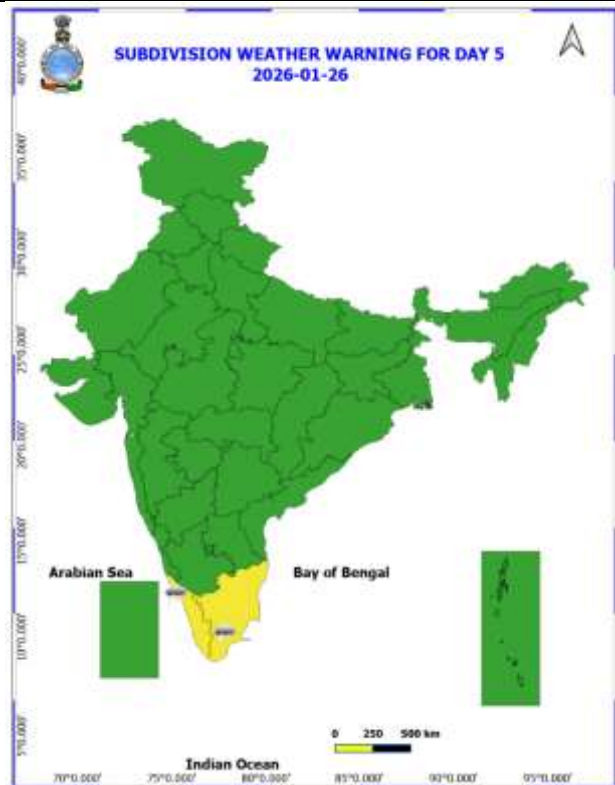
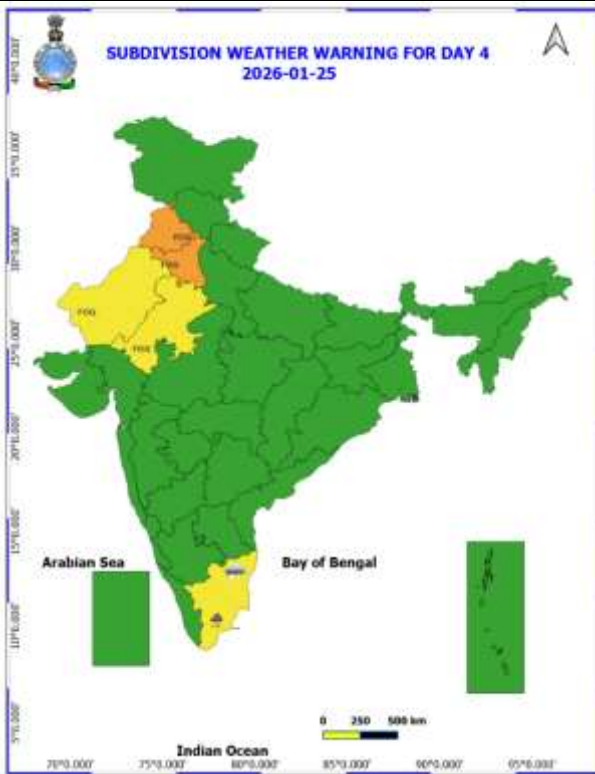
**For weather summary and forecast, kindly refer National Weather Bulletin:**

[https://mausam.imd.gov.in/responsive/all\\_india\\_forecast\\_bulletin.php](https://mausam.imd.gov.in/responsive/all_india_forecast_bulletin.php)

**For District wise warnings refer:** <https://mausam.imd.gov.in/responsive/districtWiseWarningGIS.php>

Dr. Shashi Kant  
Scientist 'D'  
NWFC, IMD, New Delhi







## Legends & abbreviations:

- ❖ **Heavy Rain:** 64.5 to 115.5 mm; **Very Heavy Rain:** 115.6 to 204.4 mm; **Extremely Heavy Rain:** >204.4mm.
- ❖ **Obsy:** Observatory; **AWS:** Automatic Weather Station; **dist:** District; **NH:** National Highway; **KVK:** Krishi Vigyan Kendra; **DVC:** Damodar Valley Corporation; **PTO:** Part Time Office.
- ❖ **Region wise classification of meteorological Sub-Divisions:**
  - **Northwest India:** Western Himalayan Region (Jammu-Kashmir-Ladakh-Gilgit-Baltistan-Muzaffarabad, Himachal Pradesh and Uttarakhand); Punjab, Haryana-Chandigarh-Delhi; West Uttar Pradesh, East Uttar Pradesh, West Rajasthan and East Rajasthan.
  - **Central India:** West Madhya Pradesh, East Madhya Pradesh, Vidarbha and Chhattisgarh.
  - **East India:** Bihar, Jharkhand, Sub-Himalayan West Bengal & Sikkim; Gangetic West Bengal, Odisha and Andaman & Nicobar Islands.
  - **Northeast India:** Arunachal Pradesh, Assam & Meghalaya and Nagaland, Manipur, Mizoram & Tripura.
  - **West India:** Gujarat Region, Saurashtra & Kutch, Konkan & Goa, Madhya Maharashtra and Marathwada.
  - **South India:** Coastal Andhra Pradesh & Yanam, Telangana, Rayalaseema, Coastal Karnataka, North Interior Karnataka, South Interior Karnataka, Kerala & Mahe, Tamil Nadu, Puducherry & Karaikal and Lakshadweep.

SPATIAL DISTRIBUTION (% of Stations reporting)			
% Stations	Category	% Stations	Category
76-100	Widespread (WS/ Most Places)	26-50	Scattered (SCT/ A Few Places)
51-75	Fairly Widespread (FWS/ Many Places)	1-25	Isolated (ISOL)

Subdivision Warning	Dust Storm	Subdivision color
Heavy Rain	Strong Surface Winds	NO WARNING
Heavy Snow	Heat Wave	WATCH(BE UPDATED)
Thunderstorms & Lightning	Cold wave	ALERT (BE PREPARED)
Hailstorm	Fog	WARNING (TAKE ACTION)

Probabilistic Forecast	
Terms	Probability of Occurrence (%)
Unlikely	< 25
Likely	25 - 50
Very Likely	50 - 75
Most Likely	> 75

Flash Flood Risk	
High Risk (Take Action)	
Moderate Risk (Be Prepared)	
Low Risk (Be Updated)	